

COVID-19 protocols for retinal cameras

TAKING RETINAL PHOTOS

- **Minimize contact time** by entering patient details into the camera software prior to patient entering the room.
- **Before every patient** be sure to clean any equipment or parts that come in direct contact with patient with 70% isopropyl alcohol and allow to air dry - occluders, pens, pen torches, table, retinal camera forehead rest and chin rest, etc. This is best done in front of the patient for their added reassurance.
- **Please be aware** of parts of the retinal camera which may accidentally come in contact with the patient - e.g. nose touching parts of the camera, patient resting their hands on different parts of the camera.
- **Implement infection control** measures including hand hygiene, respiratory and cough etiquette (handwashing, covering mouth and nose with elbow when coughing/sneezing, avoiding touching eyes, mouth, nose) and other COVID-19 clinical protocols as recommended by local Health Department (e.g. PPE wear)
- **Keep 1.5m away** from patient when possible (stay near the vision chart and behind the camera)
- **Limit what the patient touches** (e.g. patient to stay in designated chair, not to touch Diabetic Retinopathy charts and model eye, etc.)

AFTER PATIENT HAS LEFT CONSULTATION ROOM

Repeat the cleaning procedures outlined above **before** and **after** a patient leaves and routinely at the end of the day.

Surfaces that do not come into direct contact with the patient but is within droplet distance should also be disinfected at least after each clinic day (e.g. laptop, table, camera lens, etc.) and as needed.

To disinfect the camera lens, use 70% isopropyl alcohol using circular motions from the centre outwards and allow to air dry. The alcohol will leave a residue on the lens that will need to be cleaned with a microfibre cloth using circular motions from the centre outwards. Ensure all residue has been cleaned off the lens before using the camera. Residue on the lens may cause an artefact on the resulting photos.

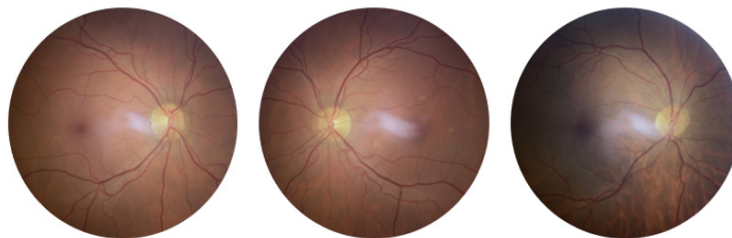


Figure 1. Example of artefact caused by a smudge on the camera lens

If you need any further information, please do not hesitate to contact:

State	Contact Person	Email	Phone Number
NSW/ACT	Dian Rahardjo	d.rahardjo@bhvi.org	02 9385 7447
NT	Sarah Nicholls	s.nicholls@bhvi.org	08 8981 9880
QLD	Dian Rahardjo	d.rahardjo@bhvi.org	02 9385 7447
SA	Chris Reksinis	chris.reksinis@ahcsa.org.au	08 8273 7200
TAS	Colette Davis	cdavis@aco.org.au	03 9349 7419
VIC	Colette Davis	cdavis@aco.org.au	03 9349 7419
WA	Helen Wright	addismob@gmail.com	