

Provision of Eye Health and Training Equipment

Project Update | December 2020

Hello and welcome to our project update as at December 2020.

COVID-19

On-site training has resumed in all states where it is safe to do so. With the ongoing changes to visiting eye care services during the pandemic, the retinal camera is a useful tool to triage those in need of urgent eye care. Please contact your state-based Consortium representative or Dian Rahardjo (d.rahardjo@brienholdenfoundation.org 02 9065 0709) for more information.

We have also released a COVID-19 Retinal Camera Protocol which outlines recommendation for safe practice during the pandemic. You can find the protocol [HERE](#).

PEHET Project ends 30 June 2021

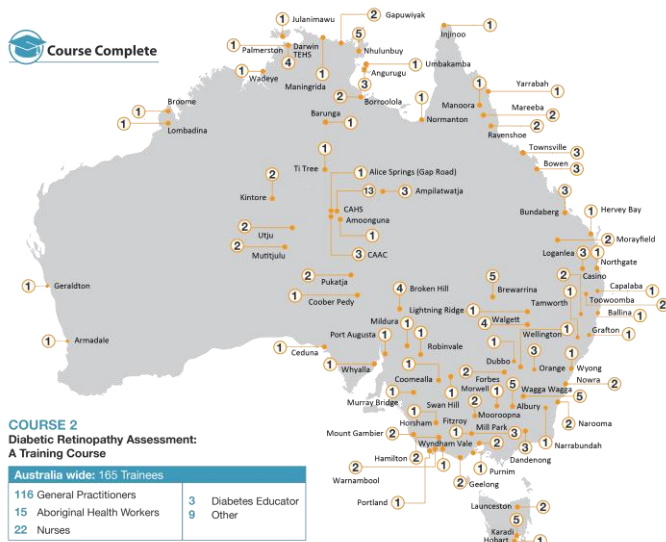
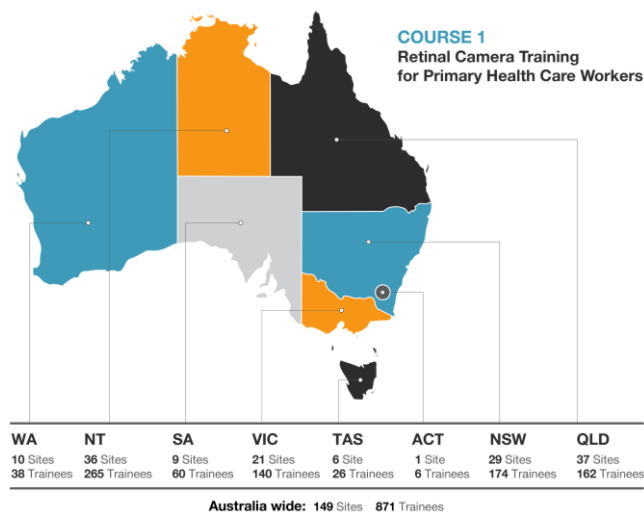
The PEHET project is currently scheduled to finish on 30 June 2021. Please contact Dian Rahardjo d.rahardjo@brienholdenfoundation.org 02 9065 0709 for any embedding support before the end of June, including:

- Any training and mentoring to assist with embedding retinal photography in your clinical processes
- New or other health workers that you would like to be enrolled onto the online training course. All courses have CPD points attached
- If you wish to complete the online retinal camera training modules again
- Any retinal camera promotional materials (see last page)
- Any additional support in embedding the retinal camera into practice

A reminder that we are also looking at the roll out of slit lamps into some health services. If your health service will benefit from a slit lamp, please contact Colina Waddell at c.waddell@brienholdenfoundation.org.

Retinal Camera Training Courses

Please see below the training statistics for Course 1 and Course 2, as at 31 December 2020. 871 health workers has been trained to use the camera between July 2017 and December 2020. A total of 165 primary health care professionals have completed the Diabetic Retinopathy Assessment Course.



Course 2 – Diabetic Retinopathy Assessment

Course 2: Diabetic Retinopathy Assessment is now accredited with ADEA (3 CPD points) and NATSIHWA (3 endorsed hours).

This online course aims to enhance primary health workers to triage for Diabetic Retinopathy within non-mydratic retinal photographs and appropriately refer to an optometrist or ophthalmologist. In addition, the course will update primary health workers on non-retinal complications of Diabetic Retinopathy and other ocular diseases that may be encountered in retinal photographs.

The course takes 2-3 hours to complete and will remain free for retinal camera recipients until June 2021.

Please contact education@cfeh.com.au if you would like to enrol to this course.

Reported Camera Usage

A reminder that the next Camera Usage reports for January – March 2021 will be due in the first week of April 2021. Please send the following reports to Colette Davis cdavis@aco.org.au:

- Quarterly Report for October to December 2020
- Equipment Usage Report (generated by the camera laptop)

Photo Grading Service from Centre for Eye Health (CFEH)

As part of Course 2: Diabetic Retinopathy Assessment, CFEH (Centre For Eye Health) provides mentoring support for those who have completed the course. Course participants are invited to upload photographs for feedback on interpretation and triaging/referral decisions. This service has been expanded, and all health services receiving a retinal camera through the PEHET project will now have unlimited access to this reading service until the end of the project in June 2021.

CFEH are also offering a HOTLINE, where their Optometry staff can provide feedback or assistance for any Course 2 participants seeking guidance as they are triaging their patient's retinal photos. Ph: (02) 8115 0777. Turnaround time for grading is usually within 48 hours. The report can then be forwarded to the GP to facilitate Medicare billing.

To find out more about this service, contact Paula Katalinic from CFEH at PKatalinic@cfeh.com.au or (02) 8115 0731.

Retinal Camera Promotional Material – Order Yours Today!

To help encourage patients at your clinic to get a retinal photograph taken, you can order a pull up or hanging banner which is free of charge to your clinic and fully funded by the project. All banners are personalised to include your health service logo and a photo of your staff using the camera.



Example of hanging banner (also available in dark colours for outdoor use)

We are also offering health services the option of retinal camera pamphlets; these pamphlets can be personalised and will show the same images that are printed on the banner. It will have a “did you know” facts and a section on the bottom for health service staff to book a clinic time for the patient.

For more information and to order a banner or pamphlets, please contact Dian Rahardjo: d.rahardjo@brienholdenfoundation.org 02 9065 0709.

For more information about the project, [click here.](#)

DO YOU HAVE DIABETES?

DID YOU KNOW?

- Even if your eyes feel fine and you see well, you can have diabetes in the eyes.
- If we catch it early and you have treatment, we can stop your eyes from getting worse.
- If you don't check, you can lose your vision.

WHAT SHOULD I DO?

- Come in and have a photo of your eyes.
- We can tell you more about diabetes in the eyes.
- If you have diabetes in the eyes, we can help you.
- If you have other eye problems, we can refer you to the eye doctor.

HOW DO I MAKE AN APPOINTMENT?

- You can make an appointment at reception – we might even be able to fit you in now; OR
- Ring to make a booking.



The back of the pamphlet contains clinic information.